

SEEMEE 200 V2.0 USER MANUAL

ACCESSORY/STRUCTURE



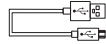
SEEMEE 200 V2.0



Saddle mount



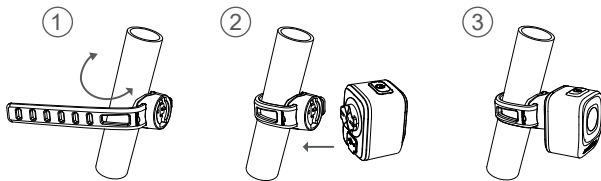
Seat post mount



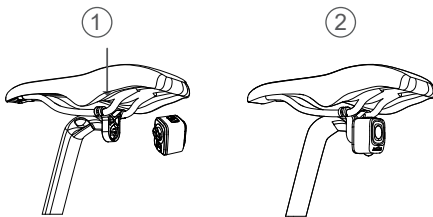
Micro USB Cable

HOW TO INSTALL

Scheme 1 :



Scheme 2 :



CHARGING/POWER INDICATOR

When the light is off,click the switch to activate battery indicator for 3 seconds.

Charging : Flash red

Fully charge : Constant green for 3 minutes

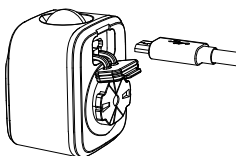
Standard charging time approx 1.5 hrs (5V 1A)

POWER INDICATOR

0%-10% : Flash red

11%-20% : Constant red

21%-100% : Constant green



OPERATION INSTRUCTIONS



When the brake sensor is on,the taillight will enter to the sleep mode after 5 minutes of inaction and auto activated on any vibrations.



When the brake sensor detects braking,the taillight will light up with maximum output.

Turn the brake function on :

When the light is off , press and hold the switch for 3s until the light lights up constantly at highest output.

Turn the brake function off :

When the light is off , press and hold the switch for 3s until the light keeps flashing quickly at highest output.

ON/OFF :

Press and hold the switch to turn the light on/off , the default output is the last mode when turned off.

CHANGE MODE :

When the light is on , single click the switch to cycle through Low-High-Flash-Group Ride-Smart-Low...

MEMORY FUCTION :

Mode memory features will save the last selected brightness level automatically.

LOW POWER MODE :

When the remaining battery power is low , the switch starts flashing and the lighting mode changes to ECO mode. The brake function is disabled during this period.

360°TRACING LIGHT :

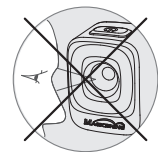
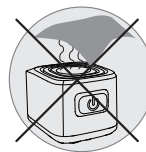
The 360 tracing light is controlled by the light sensor. It will be off during the daytime.

At nighttime , it flashes in constant mode and lights up constantly in flash mode and smart mode.

OUTPUT/RUNTIME

	MAIN LIGHT	TRACING LIGHT	RUNTIME (DAY)	RUNTIME (NIGHT)
LOW	10LM	60-0LM	27h	4h50min
HIGH	60LM	60-0LM	5h	3h40min
FLASH	60-0LM	60LM	17h	10h50min
GROUP RIDE	10-0LM	60LM	50h	6h30min
SMART (DAY)	200-0LM	0LM	26h	/
SMART (NIGHT)	60-10LM	60LM	/	4h30min

⚠ WARNING



*All performance measurements in accordance with ANSI/NEMA FL1-2009 Standard.The tests are performed indoors under a room temperature of 25 degrees Celsius with 25KM/H wind conditions. The runtime may vary depending on the external temperature and ventilation conditions,and these biases may affect the results of testing.

*The stated runtime of each mode excludes the brake function. When the brake function is on,the runtime will vary depending on the frequency of braking.

Tel: (+86) 755-295 536 69

Fax: (+86)755-275 897 77

E-mail: support@magicshine.com (order from Magicshine.com online store)

service@magicshine.com (order from other sales channels)